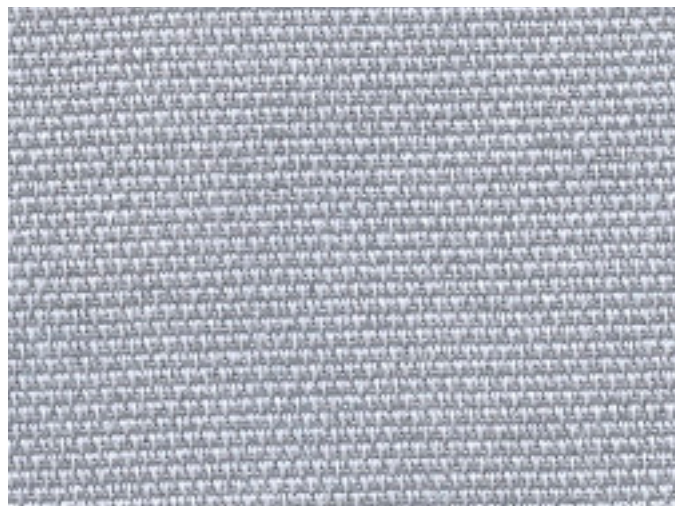


HIDE Screen



COMPOSITION	100% olefin
WIDTH	188cm
WEIGHT	256gsm
PATTERN REPEAT	H Nil / V 0.5cm
ROLL SIZE	50m (approx)
CARE CODE	Screens
CTA RATING	 COMMERCIAL SCREEN FABRICS
LIGHTFASTNESS AS 2001.4.21	>6
FIRE RATINGS AS 1530 Pt.3	Ignitability 0 Spread of Flame 0 Heat Evolved 0 Smoke Developed 3
AS/NZS 3837 (Cone Calorimeter)	BCA Group 2 Av. Specific Extinction area 273.7 m2/kg
NO. OF COLOURS	10
USE	Screens and wall panels

ENVIRONMENTAL BENEFITS

RAW MATERIALS

- 100% low embodied-energy material: olefin has a lower embodied-energy compared to polyester and nylon.

PRODUCTION

- Environmentally Improved Production Process: reduced energy consumption, reuse & recycling of waste

GREEN STAR

- HIDE can be used on white furniture certified to Ecospecifier's GreenTag GreenRate standard (Levels B + C), AFRDI's Sustainability Standard for Commercial Furniture and GECA Furniture and Fittings Standard.

The Green Star Rating Tool states "Where at least 90% of an item's total mass is certified to a GBCA recognised standard, the item can be entered as a certified product at Level A, B or C". Any fabric can be used as fabrics are almost always under 10% by weight of a furniture item.