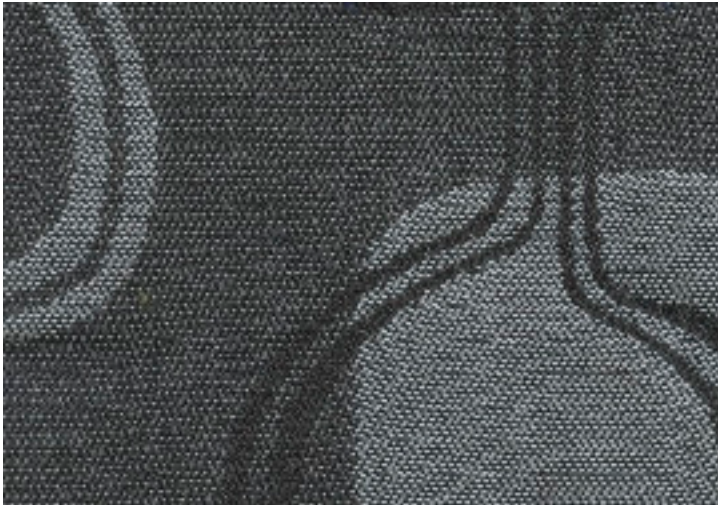


# SQUEEZE



<b>COMPOSITION</b>	100% polyester
<b>WIDTH</b>	137cm
<b>WEIGHT</b>	291gsm
<b>PATTERN REPEAT</b>	H 17.8cm / V 18.5cm
<b>ROLL SIZE</b>	50m (approx.)
<b>CARE CODE</b>	CTA 1
<b>ABRASION</b>	
Wyzenbeek ASTM 4157	>100,000 double rubs
Martindale AS2001.2.25	54,000
<b>CTA RATING</b>	<b>hc</b> HEAVY DUTY COMMERCIAL USE
<b>SEAM SLIPPAGE</b>	Warp 5.0mm Weft 3.2mm
AS2001.2.22	
<b>PILLING</b>	4 - 5
Martindale IWS196	
<b>LIGHTFASTNESS</b>	6
AS 2001.4.21	
<b>FIRE RATINGS</b>	
AS 1530 Pt.3	Ignitability 11
	Spread of Flame 0
	Heat Evolved 2
	Smoke Developed 4
AS/NZS 3837 (Cone Calorimeter)	BCA Group 1 Av. Specific Extinction area 369m <sup>2</sup> /kg
<b>NO. OF COLOURS</b>	12
<b>USE</b>	Upholstery, screens and wall panels

## ENVIRONMENTAL BENEFITS

### PRODUCTION

- Environmentally Improved Production Process: reduced energy consumption, reuse and recycling of waste.

### GREEN STARS

- SQUEEZE can be used on white furniture certified to Ecospecifier's GreenTag GreenRate standard (Levels B + C), AFRDI's Sustainability Standard for Commercial Furniture and GECA Furniture and Fittings Standard.
- The Green Star Rating Tool states "Where at least 90% of an item's total mass is certified to a GBCA recognised standard, the item can be entered as a certified product at Level A, B or C". Any fabric can be used as fabrics are almost always under 10% by weight of a furniture item.