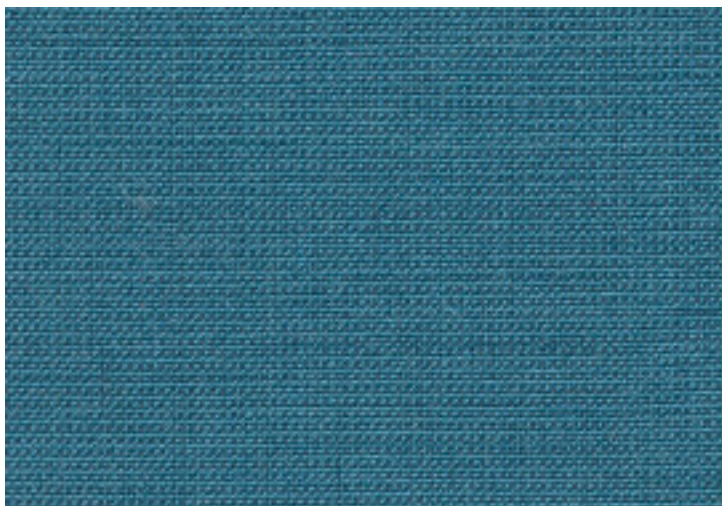



## SOURCE (LIFE Textiles®)



<b>COMPOSITION</b>	100% Australian worsted EthEco® wool		
<b>WIDTH</b>	188cm		
<b>WEIGHT</b>	320gsm		
<b>PATTERN REPEAT</b>	Nil		
<b>ROLL SIZE</b>	50m (approx.)		
<b>CARE CODE</b>	CTA 1 (upholstery) ICT SCREENS (screens)		
<b>ABRASION</b>			
Wyzenbeek ASTM 4157	150,000 double rubs		
Martindale AS2001.2.25	44,500		
<b>CTA RATING</b>			
	 <b>HEAVY DUTY COMMERCIAL USE</b>		
<b>SEAM SLIPPAGE</b>	Warp 3.5mm Weft 5.7mm		
AS2001.2.22			
<b>PILLING</b>	5		
Martindale IWS196			
<b>LIGHTFASTNESS</b>	5		
AS 2001.4.21			
<b>FIRE RATINGS</b>			
AS 1530 Pt.3	Ignitability	10	
	Spread of Flame	0	
	Heat Evolved	0	
	Smoke Developed	4	
AS/NZS 3837 (Cone Calorimeter)	BCA Group 1		
	Av. Specific Extinction area		
	75.5m2/kg		
<b>NO. OF COLOURS</b>	30		
<b>USE</b>	Upholstery, screens and wall panels		

V251010

[www.instyle.com.au](http://www.instyle.com.au)

### ENVIRONMENTAL BENEFITS

#### RAW MATERIALS

- EthEco® wool is sourced from non-mulesed sheep cared for on holistic-managed farms.
- 100% sustainable, rapidly renewable content.

#### PRODUCTION

- Manufactured to strict environmental criteria (LIFE Textiles® specification).
- Environmentally Improved Production Process: reduced water and energy use, reuse of water (30%), recycling of waste, no hazardous substances.

#### HUMAN HEALTH

- Wool absorbs indoor air contaminants, benefiting indoor air quality.
- Certified as low-VOC, meeting the Green Stars-Office Interiors emission requirements. Test certificate available on request.

#### DISPOSAL

- 100% biodegradable and recyclable through INSTYLE's REVIVE® program.

#### GREEN STAR

- SOURCE can be used on white furniture certified to Ecospecifier's GreenTag GreenRate standard (Levels B + C), AFRDI's Sustainability Standard for Commercial Furniture and GECA Furniture and Fittings Standard.
- The Green Star Rating Tool states "Where at least 90% of an item's total mass is certified to a GBCA recognised standard, the item can be entered as a certified product at Level A, B or C". Any fabric can be used as fabrics are almost always under 10% by weight of a furniture item.



**INSTYLE**